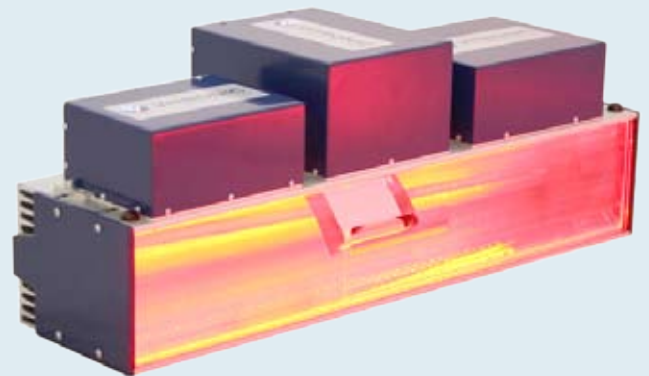


Identification in Logistics: New Break-Through Line Scan Camera

Smaller, faster, lighter and more powerful

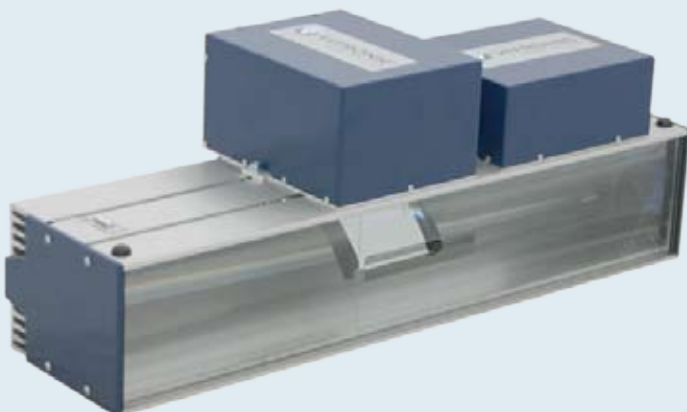
The new VITRONIC camera generation, VICAM^{ssi2}, pushes the envelope of technology: it can be used at conveyor speeds of up to 4.5 m/s (885 fpm), it is smaller and lighter, easier to handle, install and service, and it requires less energy. The new VICAM^{ssi2} is optimized for outstanding image quality at fastest conveyor speeds, resulting in highest barcode, 2-D code and OCR (optical character recognition) read rates. The camera unit consists of a compact LED illumination, a high-resolution high-speed line scan camera, a compact

power supply and, as an option, an attached mini PC for simple identification tasks as an all-integrated stand-alone system.



35 % shorter and lighter

At 660mm (26") width, the VICAM^{ssi2} is about 35% shorter than previous generations with improved image quality,



The weight of VICAM^{ssi2} has been reduced to just 16kg (~35 lbs).

making it the narrowest camera unit available on the world market. Although the unit is much smaller, the camera still covers an object width of 1,000mm (~40"). The weight has been reduced by about 35% to just 16kg (~35 lbs). This new design results in easier transportation, installation and maintenance.

Up to 40% energy saving

With the new VICAM^{ssi2}, energy consumption is reduced by up to 40% at a maximum rating of 190 W. This is achieved through a combination of highly efficient LEDs and an optimized lens, combined with an automatic standby mode that drops the power consumption to only 25W.

Homogeneous illumination over the entire field of view

The new LED illumination unit is not just smaller and lighter than before. It has also been further optimized in terms of brightness uniformity for every point in the field of view, and the light intensity is automatically adjusted for various belt speeds and different object orientations.

Faster and more sensitive camera

The camera is faster and delivers an even better image quality. It is rated for belt speeds of up to 4.5 m/s (885 fpm). Even at this extreme speed, the camera is able to acquire images at a resolution of 170dpi. Furthermore, the focus mechanism adapts to higher speeds and works twice as fast as before.



Modular structure for the utmost customer service

From camera to mini PC, all system components are easily replaced in just two minutes or less, without the need for external service or special tools. Just two screws, which are openly accessible from the outside, hold every bolt-on component to the illumination unit. The illumination unit itself can be replaced in less than five minutes since it is mounted with just four screws.



Compact mini PC unit

While complex and multi-sided identification tasks are still processed by separate, powerful PCs, Vitronic offers an optional bolt-on mini PC for barcode/2-D code reading and simple OCR tasks. This mini PC is attached directly to the illumination unit, using the system's power supply.

Self diagnosis

The operating status of the camera unit is continually monitored. All factors that influence the life span of the camera and illumination are permanently recorded. This data is considered during factory servicing, providing rapid analysis.

Technical Data

Dimensions (l x w x h)	660mm x 240mm x 334mm / 26.0inch x 9.5inch x 13.2inch
Weight	16kg / 35.3lbs. (18kg / 39.7lbs. with mini PC)
Camera	Line scan camera, 8k/250MHz
Illumination	High-power LED illumination
Conveyor speed	up to 4.5 m/s / 885 fpm
Power consumption	max. 190 W (max. 220 W with mini PC)
MTBF	> 50.000 h
Environmental temp. range	0°C to +60°C / 32°F to +140°F (without mini PC) 0°C to +50°C / 32°F to +122°F (with mini PC)
Storage temp.	-10°C to +60°C / 14°F to +140°F
Humidity	10-95 %, non-condensing
Protection class	IP 54